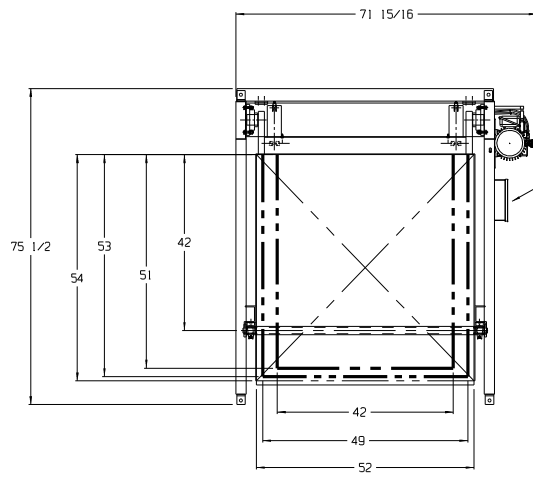
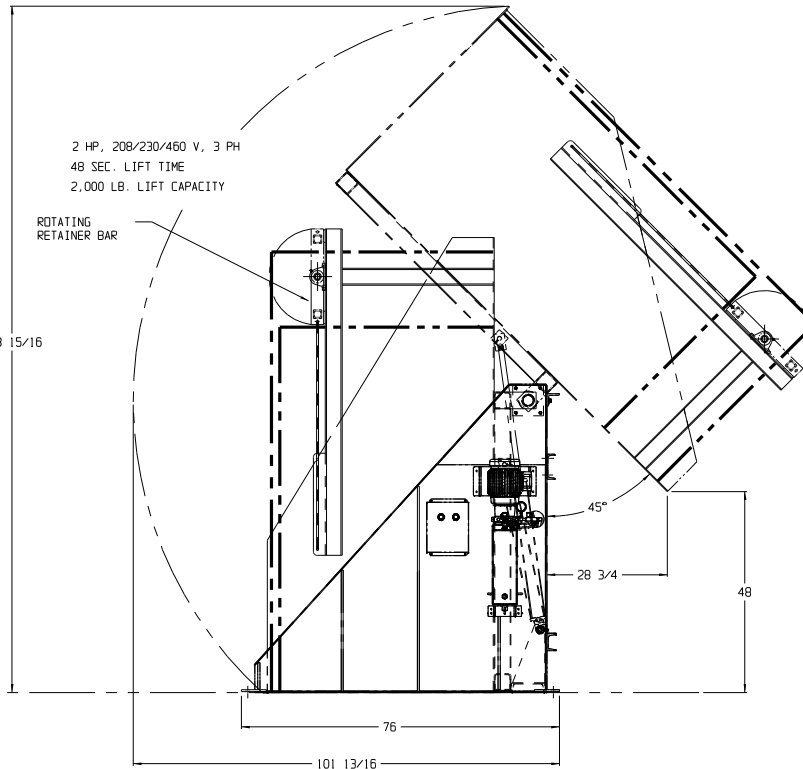
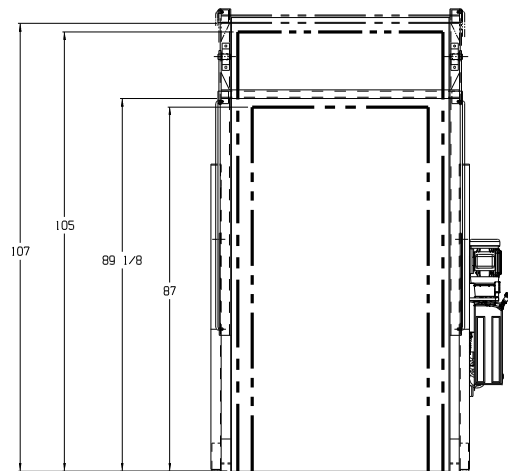


PROPRIETARY INFORMATION
 THIS DRAWING IS THE CONFIDENTIAL PROPERTY OF ENDURA-VEYOR, INC. AND TRANSMITTED IN CONFIDENCE. THE REPRODUCTION, USE OR DISCLOSURE, IN WHOLE OR IN PART, OF THE DESIGN OR DETAILS CONTAINED HEREIN IS PROHIBITED WITHOUT THE EXPRESS WRITTEN PERMISSION OF ENDURA-VEYOR, INC.

**PLEASE SPECIFY:
 RIGHT HAND OR
 LEFT HAND PUMP**



CONTAINER SIZES:
 42" WIDE X 51" DEEP X 87" TALL
 49" WIDE X 53" DEEP X 105" TALL



**PAINT COLOR:
 EVI-SAFETY BLUE**

APPROVED
 AS SHOWN AS NOTED
 CO. NAME _____
 SIGNATURE _____
 DATE _____

SAFETY REVIEW
 THE NEED FOR SAFETY DEVICES VARIES WITH EACH APPLICATION OF THIS PRODUCT. THIS DRAWING MAY NOT INCLUDE ALL APPROPRIATE SAFETY DEVICES FOR YOUR APPLICATION. AS SYSTEMS INTEGRATOR, PLEASE ADVISE YOUR CUSTOMER OF DEVICES THAT ARE APPROPRIATE FOR HIS/HER APPLICATION, BASED ON YOUR SAFETY ASSESSMENT. DEVICES MAY INCLUDE, BUT ARE NOT LIMITED TO THOSE SUCH AS, ADDITIONAL GUARDING, SAFETY CONTROLS, BARRICADES, END STOPS, ETC. COMPLIANCE WITH FEDERAL, STATE, OSHA AND LOCAL LAWS OR CODES ARE THE RESPONSIBILITY OF BOTH YOU, AS THE SYSTEMS INTEGRATOR/DISTRIBUTOR, AND THE END USER.

APPLICATION REVIEW
 PLEASE REVIEW THE DUMPER DESIGN FOR ITS ABILITY TO FUNCTION PROPERLY IN YOUR INTENDED APPLICATION. SYSTEM INTEGRATION AND APPLICATION REVIEW ARE NOT THE RESPONSIBILITY OF ENDURA-VEYOR INC. THEREFORE, ENDURA-VEYOR INC. MAKES NO CLAIM AS TO THE PERFORMANCE OF THIS DESIGN FOR ANY PARTICULAR PURPOSE OR APPLICATION.

ENDURA-VEYOR P.O. BOX 205 ALPENA, MI 49707 PHONE: (989) 358-7060 FAX: (989) 358-7065	JOB NO: -	ORG. NO.: 73656-A APPROVAL
	DRAWN BY: JIMLE	
	SCALE: N/A	
	DATE: 09/24/10	
TITLE: CONTAINER DUMPER MODEL #2BD-48-5254-460	REVISION: -	

\\APN-FSJ\JEM\EVN\JOBS\CODUNNEW STYLE TIPPERS\2000 LB LIFT\73656-SPECIAL HOLD DOWN PRT